

Product Change Notification



As part of our commitment to customers, it is our policy to post updates on any changes that may affect a product's fit, form or function.

We make every effort to contact customers who have purchased a part within the previous year.

We also encourage you to sign up to automatically receive alerts regarding such product changes by scanning the QR code. Our Quality Department is happy to address any concerns you may have about a change.

Where possible, you will be informed if we plan to make a product obsolete. You will have the opportunity to purchase any remaining stock and we will assist in finding an alternative product. Additionally, we can send drawings or samples of alternative products for evaluation.

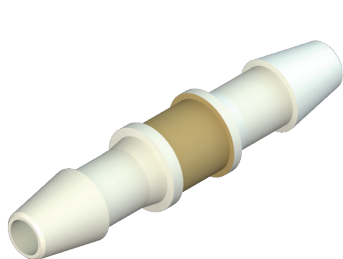
Please note that any changes to our custom product range are managed directly with the customer concerned.

Statement concerning “Fit, Form, and Function”

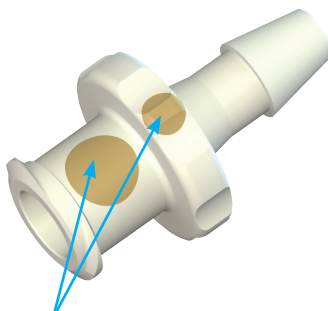
Fit: the ability of a part to physically interface with, connect to, or become an integral part of another part. Injectech defines its standard product connector line as the “fit” to a mating connector and/or tubing. Exclusions may be considered perpendicular to intended “fit”. Customer specific “fit” requirements for products/connectors may be defined by end user with the creation of a unique part number.

Form: the shape, size, dimensions, mass, weight and other visual parameters that uniquely distinguish a part. Injectech considers “form” that applies directly to the function/performance of the connector/product's intended use. Exclusions that may apply are variations in ejector pin marks that do not interfere with product's intended use. Customers may request consideration with the creation of a custom part number.

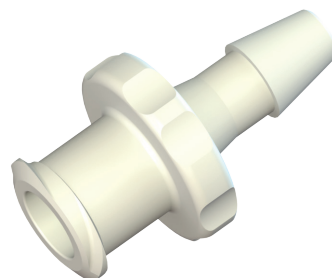
Function: the action or actions that a part is designed to perform. Injectech products are initially designed to allow the transfer of media through the product or securing the product supporting media transfer. There are no exclusions from this definition as customers are required to test Injectech products in their specific applications.



Example: If a customer requires the part diameter to be controlled because the end use requires the fitting to snap into a housing. This would require a new assigned part number.



Ejector Pin Marks



Notes: any additional requirements specifying new part number assignments may be subject to a NRE (non-recurring engineering fee) and/or a minimum order requirement.

Please contact our sales department with any questions at sales@injectech.us